

# CHILD PROTECTION: MANAGEMENT OF SUSPECTED PHYSICAL ABUSE OR NEGLECT - ED SCH

## PROCEDURE <sup>®</sup>

\*For Sexual Assault-Please refer to **Child Protection: Management of Suspected Child Sexual Assault- SCH ED Guidelines**

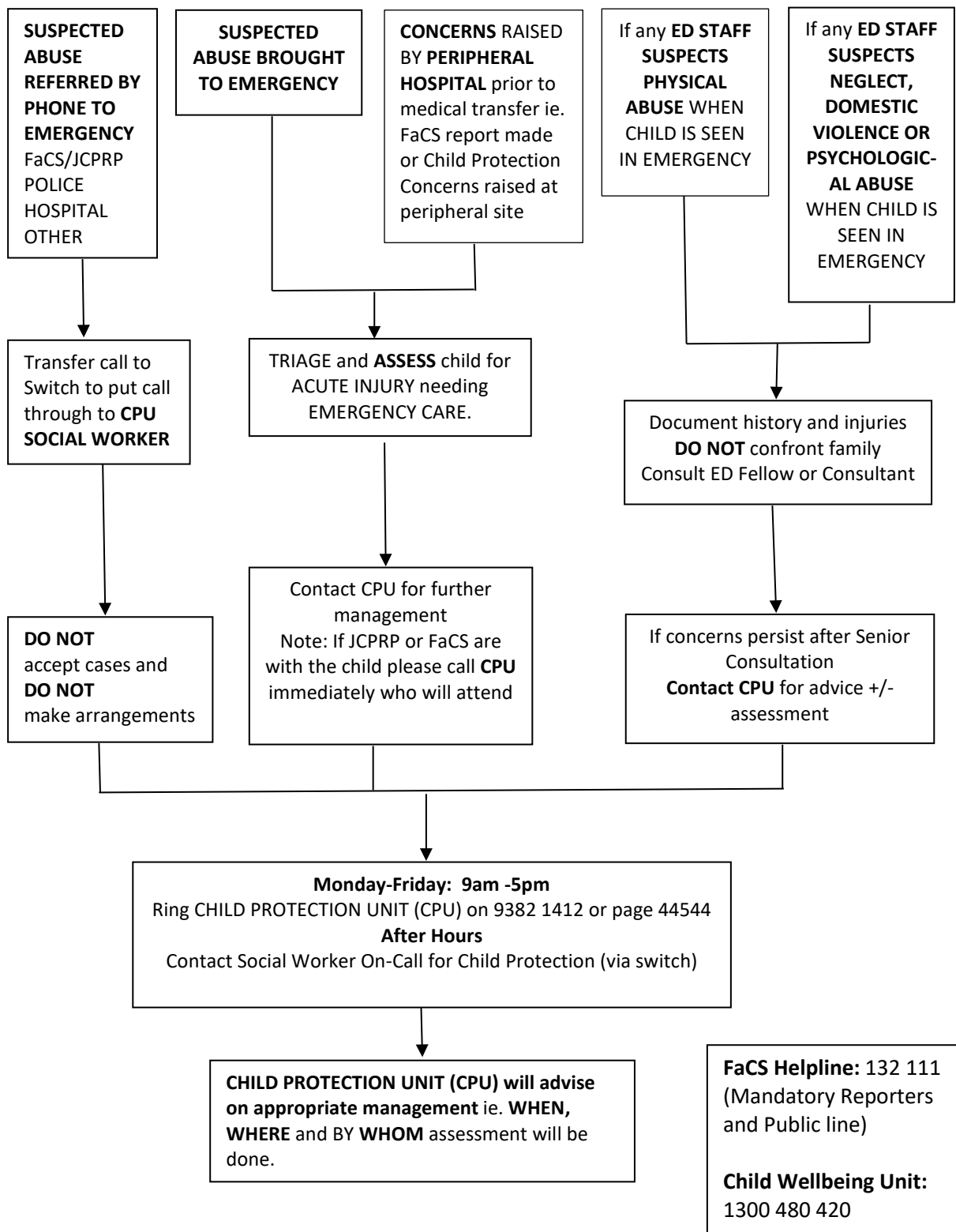
<b>DOCUMENT SUMMARY/KEY POINTS</b>
<ul style="list-style-type: none"> <li>Supports ED Clinicians in the management of children and young people where there is suspicion of physical abuse or neglect.</li> </ul>

<b>CHANGE SUMMARY</b>
<ul style="list-style-type: none"> <li>N/A</li> </ul>

<b>READ ACKNOWLEDGEMENT</b>
<ul style="list-style-type: none"> <li>All SCH ED clinicians should read and acknowledge this policy.</li> <li>All SCH ED clinicians must undergo mandatory Child Protection Training (see HETI Online)</li> </ul>

This document reflects what is currently regarded as safe practice. However, as in any clinical situation, there may be factors which cannot be covered by a single set of guidelines. This document does not replace the need for the application of clinical judgement to each individual presentation.

<b>Approved by:</b>	SCHN Policy, Procedure and Guideline Committee	
<b>Date Effective:</b>	1 <sup>st</sup> January, 2018	<b>Review Period:</b> 3 years
<b>Team Leader:</b>	Nurse Manager	<b>Area/Dept:</b> Emergency



## Related Information

**Child Wellbeing and Child Protection** (SCHN coversheet MoH PD2013\_007 & GL2014\_012): <http://chw.schn.health.nsw.gov.au/o/documents/policies/policies/2014-9055.pdf>

**Keep Them Safe** NSWKids+Families site: <http://www.kidsfamilies.health.nsw.gov.au/current-work/programs/programs-and-initiatives/keep-them-safe/>

NSW Government Online **Mandatory Reporter Guide**:

<http://sdm.community.nsw.gov.au/mrg/screen/DoCS/en-GB/summary?user=guest>

**e-Reporting is available at:** <https://kidsreport.facs.nsw.gov.au>

### **Copyright notice and disclaimer:**

The use of this document outside Sydney Children's Hospitals Network (SCHN), or its reproduction in whole or in part, is subject to acknowledgement that it is the property of SCHN. SCHN has done everything practicable to make this document accurate, up-to-date and in accordance with accepted legislation and standards at the date of publication. SCHN is not responsible for consequences arising from the use of this document outside SCHN. A current version of this document is only available electronically from the Hospitals. If this document is printed, it is only valid to the date of printing.