

# FAST FACTS

2018/19

the children's hospital at Westmead

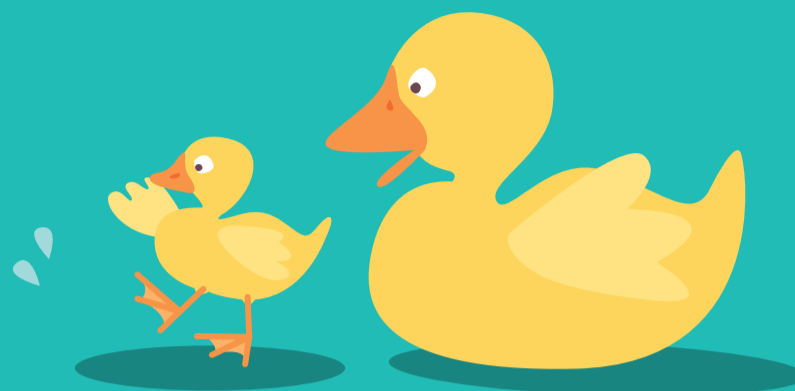
The Sydney children's Hospitals Network



**34,067**  
Hospital admissions



**4.9 days**  
Average length of stay



**87,003**  
Number of children cared for



**61,426**  
Emergency Department presentations



**14,036**  
Operations



**3,585**  
Staff



**140 years**  
of caring for kids



**6,760**  
Plaster casts



**11**  
Kindifarm visits



**6.7**  
Tonnes of theatre waste recycled



**4,253**  
Hospital in the Home visits



**90 times**  
The celebration bell was rung to mark the end of treatment



**15-16 litres**  
of bubbles used by Child Life Therapists



**960 pieces**  
of Play Doh used by Child Life Therapists

**\$32,767,402**  
Contributed to the Network by Sydney Children's Hospitals Foundation\*

Sydney Children's Hospitals Foundation is proud to support The Children's Hospital at Westmead. Donate today to help sick kids live their healthiest lives. [bandagedbear.org.au](http://bandagedbear.org.au)

Sydney Children's Hospitals Foundation

the children's hospital at Westmead

\*SCHF contribution is for 2018/19 Financial Year. The Foundation's 2018 Annual Report covers an 18-month period, showing a contribution of \$41.7 million from 1 Jan 2018 to 30 Jun 2019.