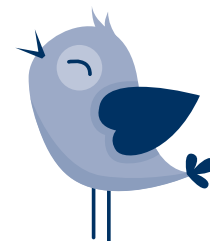


# 15th Annual Paediatric Palliative Care Symposium



Thursday 7 March 2019

**International guest speaker:** Stacy Remke MSW, LICSW, ACHP-SW

Stacy is a Clinical Social Worker and a Senior Teaching Specialist at the University of Minnesota's School of Social Work.

She received her social work degree at the University of Minnesota and has more than 27 years' experience in paediatric care. Stacy's area of interest is in caring for children and their families who are coping with chronic, complex, and/or life-threatening conditions, end-of life care and medical fragility. Prior to working at the university she was co-founder of the Pain, Palliative Care and Integrative Medicine Program at Children's Hospitals and Clinics of Minnesota.

## Faculty

<b>Joan "Jody" Chrastek</b>	RN DNP CHPN FPCN, Paediatric Advanced Complex Care Team Coordinator, FACE-TC Research Interventionist, Fairview Home Care and Hospice, Minneapolis.
<b>Leigh Donovan</b>	Allied Health Clinical Educator Coordinator for the Quality of Collaborative Care Australia Project (QuoCCA). Prior to which she held the inaugural position of Bereavement Coordinator at the Lady Cilento Children's Hospital, QLD since 2010.
<b>Sara Fleming</b>	Nurse Practitioner, Clinical Lead Paediatric Palliative Care, Women's and Children's Health Network, Adelaide, SA.
<b>Rachel Halpin-Evans</b>	Fellow, Palliative Care, The Children's Hospital at Westmead, NSW.
<b>Ksenia Hogg</b>	Staff Specialist, Bear Cottage, Sydney Children's Hospitals Network, NSW.
<b>Tiina Jaaniste</b>	Head of Pain and Palliative Care Research, Department of Pain and Palliative Care, Sydney Children's Hospital, Randwick, NSW.
<b>Narelle Martin</b>	Nurse Unit Manager, Bear Cottage, Manly, NSW
<b>Suzanne Momber</b>	Oncology Clinical Nurse Specialist and Palliative Care Coordinator (Oncology), Perth Children's Hospital, WA.
<b>Marianne Phillips</b>	Consultant Paediatric and Adolescent Oncologist and Palliative Care Specialist Perth Children's Hospital, WA.
<b>Sharon Ryan</b>	Paediatric Palliative Medicine Physician, John Hunter Children's Hospital, NSW.

**Time:** 8.45am – 5.10pm (Registration from 8.15am)

**Venue:** Lorimer Dods Lecture Theatre  
Level 4, The Children's Hospital at Westmead  
Corner Hawkesbury Road and Hainsworth Street,  
Westmead NSW 2145

Please go to [www.schn.health.nsw.gov.au/2019-ppcs](http://www.schn.health.nsw.gov.au/2019-ppcs) for an online version of the program

## Program

<b>8.15am - 8.45am</b>	<b>Registration</b>
8.45am - 9.15am	<b>Paediatric hospice care – a patient's journey</b> (Ksenia Hogg and Narelle Martin)
9.15am - 9.55am	<b>The yin and the yang</b> (Marianne Phillips/ Suzanne Momber)
<b>9.55am - 10.15am</b>	<b>Morning Tea</b>
10.15am - 10.45am	<b>Last Days of Life Toolkit paediatric/neonatal</b> (Sharon Ryan)
10.45am - 11.15am	<b>Paediatric palliative care and the sibling experience: new data on the role of familial communication and resilience</b> (Tiina Jaaniste)
	<b>International guest speaker</b>
11.15am - 12pm	<b>Paediatric palliative care activities that can foster resilience in bereavement for families</b> (Stacy Remke)
<b>12pm - 1pm</b>	<b>Lunch</b>
	<b>Grand rounds begin</b>
1pm - 2pm	<b>Vicarious trauma and building resilience in caring for chronic complex children</b> (Stacy Remke)
<b>2pm - 2.10pm</b>	<b>Brief break</b>
2.10pm - 2.50pm	<b>Cross-cultural ethics in paediatric palliative care</b> (Jody Chrastek)
2.50pm - 3.30pm	<b>Recommendations for best practice paediatric hospital bereavement care: findings from a 2017 Churchill Fellowship</b> (Leigh Donovan)
<b>3.30pm - 3.50pm</b>	<b>Afternoon tea</b>
3.50pm - 4.30pm	<b>The birth of a Perinatal Palliative Care Pathway</b> (Sara Fleming)
4.30pm - 5.10pm	<b>"We care and not harm"</b> (Rachel Halpin-Evans)
<b>5.10pm</b>	<b>Conclusion</b>

